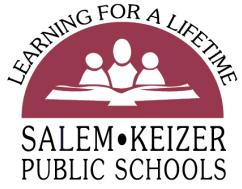




SALEM•KEIZER  
PUBLIC SCHOOLS

# 21-22 SIA Annual Report

---



# 21-22 Student Investment Account Overview

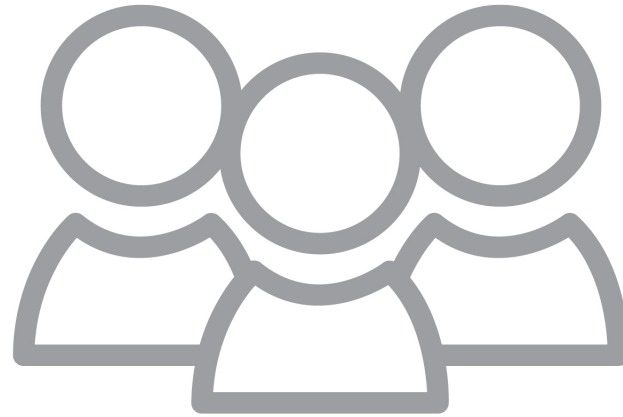
- Multi-year State Funding Source
- Focused on Academic and Social Emotional, Behavior, and Mental Health
- All students will benefit but focused student groups and families are prioritized:
  - Students of color
  - Students with disabilities
  - Emerging bilingual students
  - Students navigating poverty, homelessness and foster care
  - Other student groups that have historically experienced academic disparities

# 21-22 Student Investment Account Highlights

- Continuation of SIA Advisory Committee
- SIA Plan for 21-22 first year fully funded at \$36 million
- Prioritizing SIA Strategies based pandemic impact
  - Adjusting SIA Activities within Strategies based on pre-approved “Plan B” and “Plan C” items
- Preparing for future SIA Strategy implementation
  - Implemented components of all 11 Strategies
  - Braided funding with other sources to support coherence
- Deep ongoing engagement of the community starting with SIA and expanding to Integrated Guidance Needs Assessments.

# 21-22 Student Investment Account Next Steps

- Continued focus on recruiting, hiring, and retention of diverse staff
- Continued focus on social emotional, behavioral, and mental health
  - “Sense of Belonging” Key Performance Indicator
- Increased focus on closing academic opportunity gaps
  - Accelerating learning
- Continue deep community engagement
- Continue early implementation efforts for restorative practices
- Broaden staff access to all for Equity, Diversity, and Inclusion training



**Questions?**