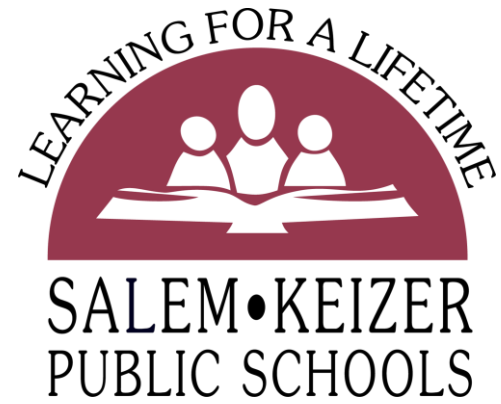


Superintendent's Report

December 13, 2022



Behavior Updates

Discipline Data

Suspensions (9/1-11/30)

	22-23	21-22	20-21	19-20	18-19
September	600	368	0	760	608
October	768	700	0	1,538	1,131
November	1,129	952	0	1,355	1,054
Total	2,497	2,020	0	3,653	2,973

Discipline Data

Major Discipline Incidents (9/1-11/30)

	22-23	21-22	20-21	19-20	18-19
September	493	730	0	605	639
October	772	1,291	4	1,047	1,166
November	801	1,408	2	764	794
Total	2,066	3,429	6	2,416	2,599

Discipline Data

Expulsions (9/1-11/30)

	22-23	21-22	20-21	19-20	18-19
September	7	7	0	24	15
October	9	11	0	30	16
November	6	10	0	30	17
Total	22	28	0	84	48

Student Discipline and Behaviors

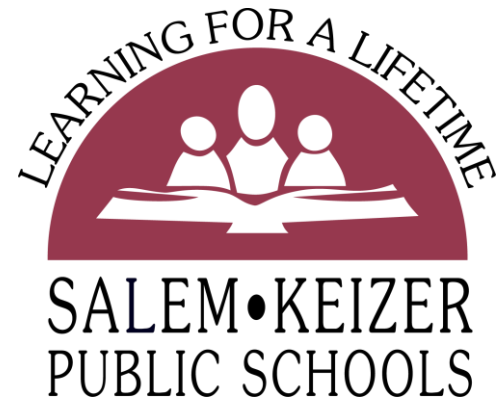
As we navigate the year

- **Continue to focus on relationships:** We know all schools aren't trained in restorative practices; 5-year implementation timeline
- **Continue positive behavior support systems**
- **Restorative practices** aren't a substitute for referrals and accountability
- **Accountability** is a component of a restorative process
- Tier 1 and Tier 2 interventions showing result
- Tier 3 and Tier 4 need additional solutions, which we are working on

Tier 3 and Tier 4 – What can we do?

A few changes



- **Opening of new developmental kindergarten (K/1)**
 - Starting with 9 students at an elementary school
 - Goal to serve 17 students when at capacity – 4 to 6 weeks from opening
 - This can positively impact not only these students but school systems
- **Continue navigating more intensive placements** – each student is different
- **Build a stronger community coalition** to support the right instruction at the right time for students exhibiting Tier 3 and Tier 4



Curriculum Adoption Update

Middle School Language Arts and Social Studies

Curriculum Adoption Process

- Steering Committee  Full Adoption Committee
- Pilot Materials
- Community Engagement
- Recommendation to the Board  Board Approval
- Schools Receive Materials and Training

Middle School Language Arts and Social Studies Steering Committee Work

- **Meetings began in mid-October**
- **Content teachers were surveyed** for input on materials adoption outcomes
- **Materials were reviewed** and feedback on materials from the ODE materials list was provided on:
 - Written materials
 - Publisher presentations
 - Test drives (try a lesson and provide feedback)
- **Steering committee will provide** curated data to provide to formal committee for decision-making and next steps

Formal Committee's Charge

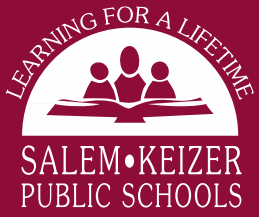
- **Analyze data** collected by the steering committee to determine pilot materials
- **Determine evaluation** (data collection and results indicators) of pilots
- **Determine community/parent engagement** methods and timeline
- **Analyze data** from pilot programs and community engagement
- **Make recommendation** for adoption to Director of Curriculum & Instruction and, ultimately, the Board

Curriculum Adoption

- **The steering committee** consists of one content area teacher representative from each school and is led by a program associate.
- **Board members serve** on the full adoption committee. Language Arts/Social Studies adoption board reps are Directors Guzmán-Ortiz and Hinojos-Pressey.
- **Parents serve** on the full adoption committee. They are selected from standing committees, such as SPED Advisory, Native American Pac, SIA Advisory Committee, etc.

Why an Integrated Committee Approach?

- Middle School Language Arts (LA) and Social Studies (SS) will be an **integrated committee** rather than two separate committees.
- This is **important** because Language Arts and Social Studies the **skills** learned in Language Arts **are often transferred** into Social Studies class, and vice versa.
- Some middle schools link LA/SS courses **are linked on student schedules.**
- The integrated approach **supports teacher collaboration** between content areas.



Middle School LA and SS Adoption Timeline

December 2022

- Full Adoption Committee Formed
- Curriculum Choices Narrowed

January 2023 - February 2023

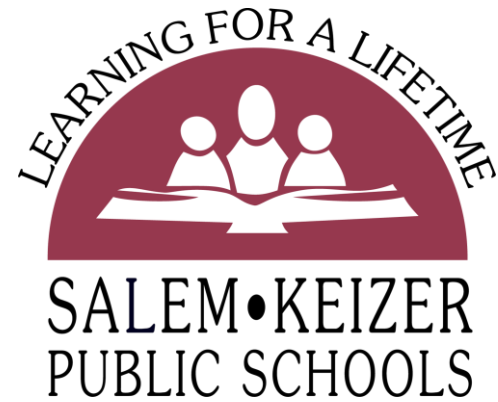
- Pilot materials
- Community Engagement on Pilot Materials

March - April 2023

- Final Selection (includes vote from all teachers)
- Board Approval Process
- Implementation Process Begins (ordering of materials, trainings scheduled, district documents updated)

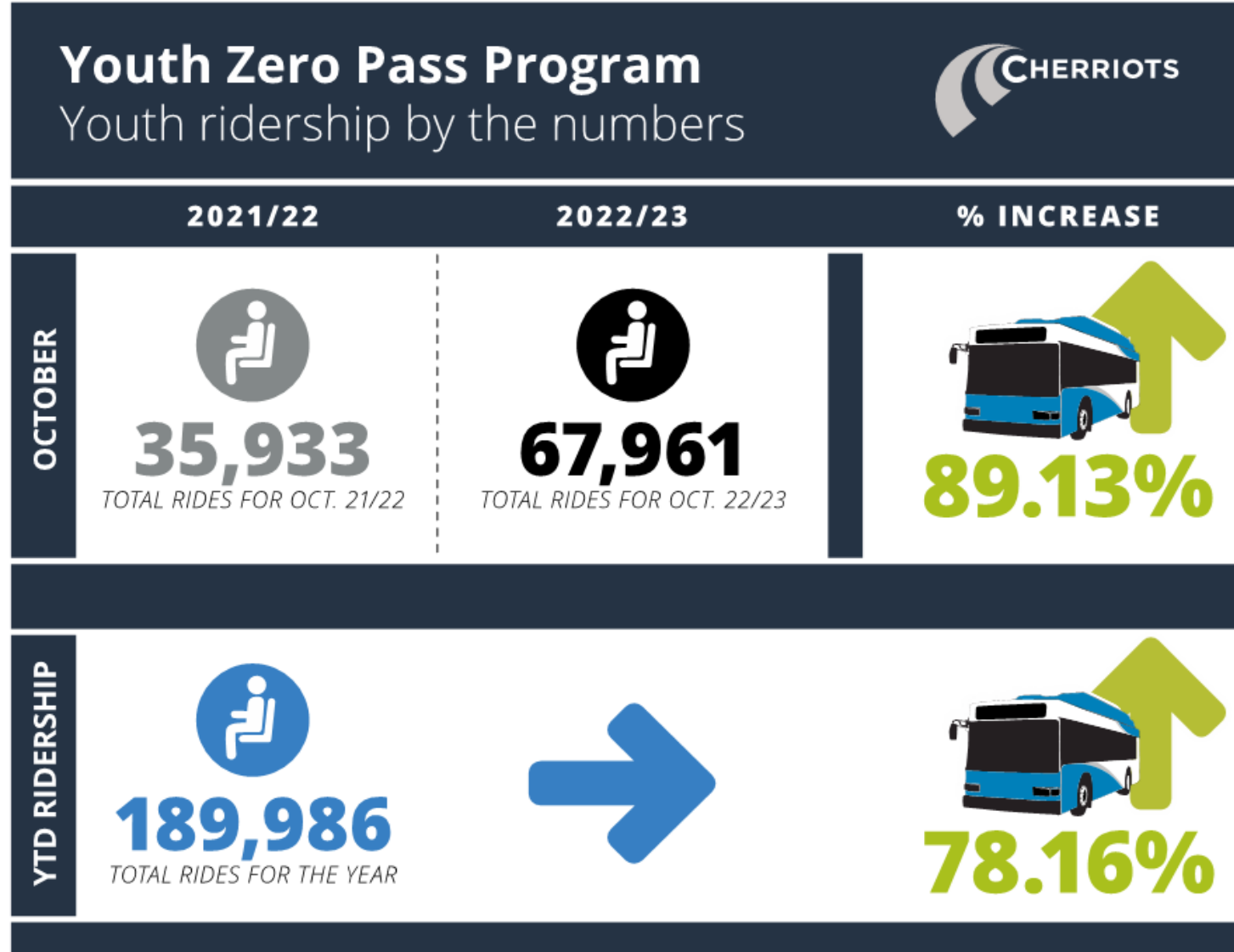
Fall 2023

- Classroom implementation of new materials



Elementary Health Adoption Update

Cherriots Youth Zero Pass Program



Salem-Keizer School Fund



**2018 - Donor Advised Funds
Created**

**2019 - Organizational Advised Funds
Created**

**2020/2021 – Salem Keizer Educational Foundation
Closed**

Educational Foundation

vs.

Educational Fund

Long-term Investments

And

Spend Down

Funds



**United Way of the
Mid-Willamette Valley**

United Community Foundation

**501(C) 3 – Tax Exempt
Supporting Organization**

and

United Way of Mid-Willamette Valley



**United Way of the
Mid-Willamette Valley**

Salem-Keizer/United Community Foundation School Fund

Students			
Number of Students	41,574	Administrators	
Number Title 1 Schools	33	Office Support	
Number of Title 1 Students	21,457	District Support	2660
Teachers	1,924		
Educational Assistants	1,022		
Counselors	109		
Support Staff			
Total	3,055	Total	2660

Monthly Gift Size	\$5	\$10	\$20	\$25
Total Campaign				
TOTAL Salem Keizer Annual Net	\$ 357,989	\$ 715,978	\$ 1,431,955	\$ 1,789,944
Title 1 School/Equity Fund	\$ 26,849	\$ 53,698	\$ 107,397	\$ 134,246
UW Annual Overhead	\$ 50,118	\$ 100,237	\$ 200,474	\$ 250,592
Total Contributions	\$ 447,486	\$ 894,972	\$ 1,789,944	\$ 2,237,430
SKSD - District Wide Fund				
District Campaign Net	\$ 3,600	\$ 7,200	\$ 14,400	\$ 18,000
UW Overhead	\$ 504	\$ 1,008	\$ 2,016	\$ 2,520
Awesome 3000	\$ 35,000	\$ 35,000	\$ 35,000	\$ 35,000
Title 1 Contribution	\$ 2,346	\$ 2,592	\$ 3,085	\$ 3,331
TOTAL District Wide Fund	\$ 36,758	\$ 40,616	\$ 48,331	\$ 52,189

Auburn Elementary

Students	
Number of Students	599
Number Title 1 Schools	1
Number of Title 1 Students	599
Teachers	
Teachers	29
Educational Assistants	
Educational Assistants	23
Counselors	
Counselors	2
Support Staff	
Support Staff	2
Total	54

Monthly Gift Size	\$5	\$10	\$20	\$25
Total Campaign				
TOTAL Salem Keizer Annual Net	\$ 357,989	\$ 715,978	\$ 1,431,955	\$ 1,789,944
Title 1 School/Equity Fund	\$ 26,849	\$ 53,698	\$ 107,397	\$ 134,246
UW Annual Overhead	\$ 50,118	\$ 100,237	\$ 200,474	\$ 250,592
Total Contributions	\$ 447,486	\$ 894,972	\$ 1,789,944	\$ 2,237,430
Title 1 School/Equity Fund Contribution				
Title 1 Proportion	2.79%			
Title 1 Contribution Phase 1	\$ 123	\$ 246	\$ 491	\$ 614
Title 1 Contribution Phase 2	\$ 627	\$ 1,253	\$ 2,507	\$ 3,134
Title 1 Contribution District Wide	\$ 65	\$ 72	\$ 86	\$ 93
Title 1 School Contribution Total	\$ 815	\$ 1,571	\$ 3,084	\$ 3,841



Is there a need?

Current employee pipelines and training facilities for pilots are only meeting an estimated 38% of industry needs to keep aviation staffed at prior service levels.

-U.S. Department of Transportation

“The staff shortages mean that we are struggling to operate our planned schedule with the quality and punctuality we promise. This creates safety concerns as well.”

-International Air Transport Assoc.

The aviation industry will need more than 610,000 more aircraft maintenance technicians between now and 2040. By 2031 the aircraft mechanic population will be 30,000 techs short for just commercial flight alone.



If we build it, they will come.

- Survey of students from each of the six comprehensive high schools
- Out of 254 students surveyed, 43% said they have a definite interest in attending the Aviation Program
- Another 34% said they have a possible interest and would like more information



Why this building at the airport?

- Depth of Experience
- Building Layout
- Aircraft Maintenance
- Community Support
- Value Added



Funding for the Project

- The Because Foundation
- Corporate Donors
- In-Kind Donations
- Grant Applications
- Grant Funding





Questions?

CTEC Expansion
Growing the Competitive Advantage