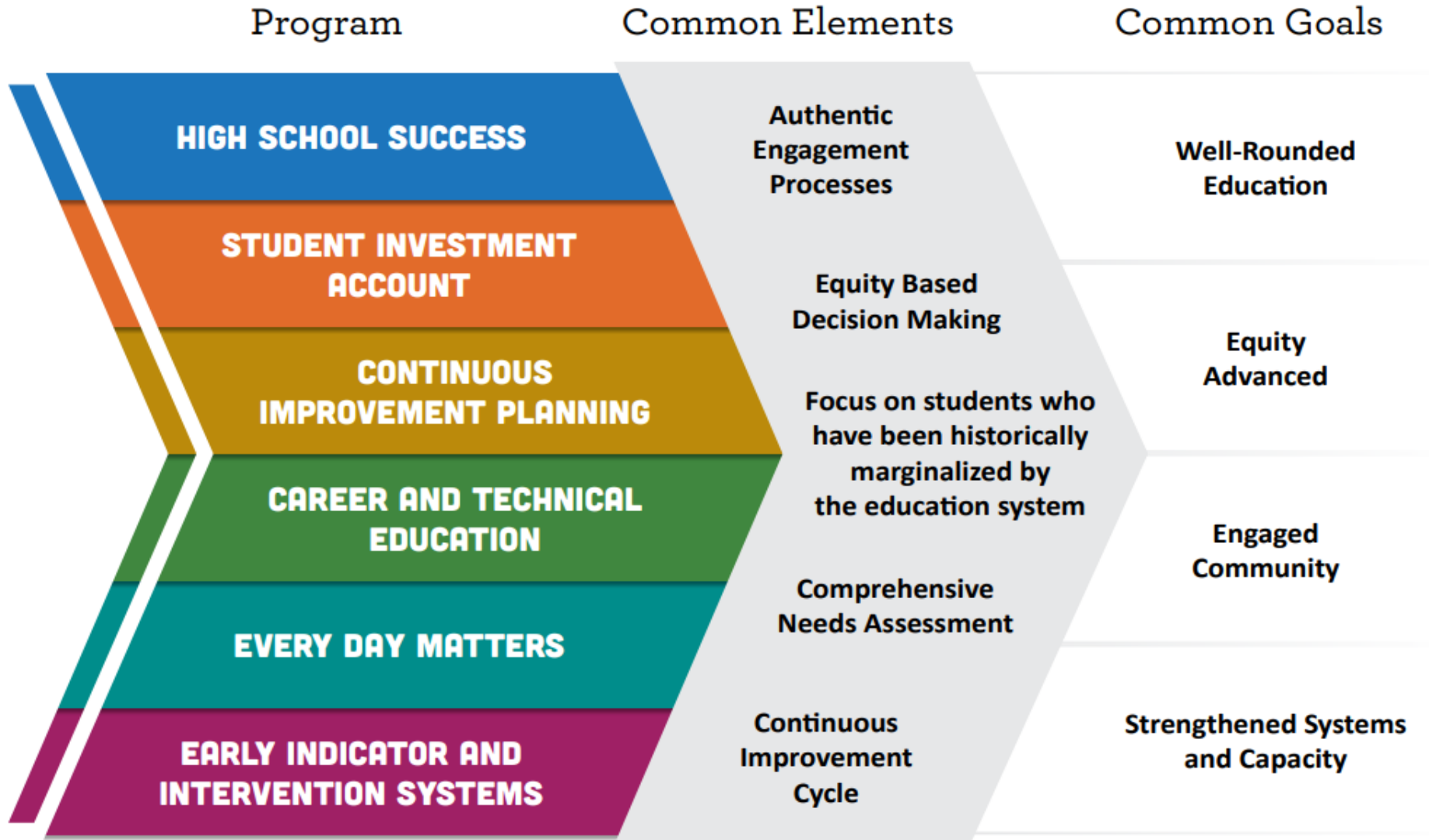


Integrated Application Plan & Budget

What is “Integrated Planning”?



Community Input



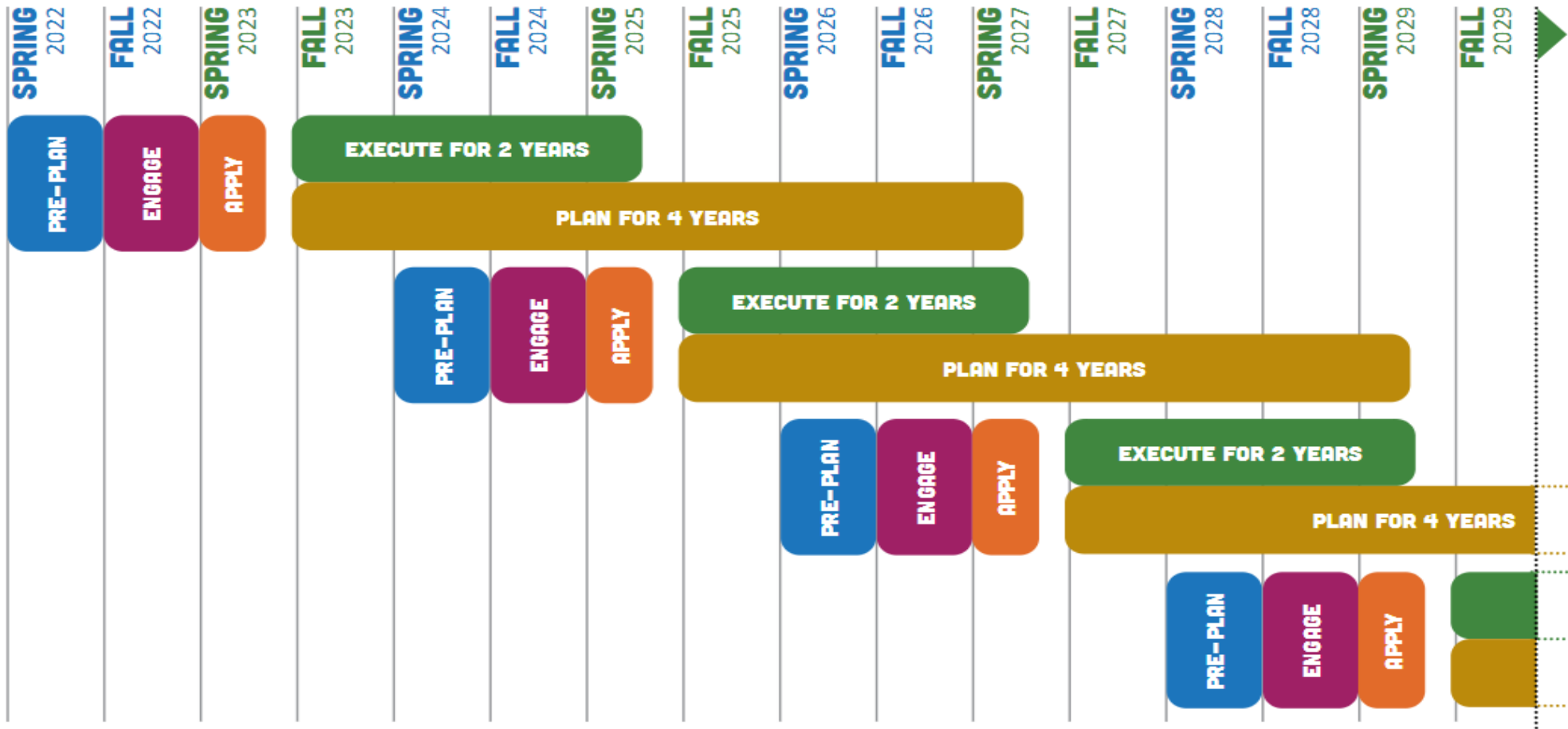
More than 1,100 families, staff, community, and student participants informed our Integrated Plan.

Continuous Improvement Cycle

Setting a Consistent Long-term Rhythm

Legislative intent imagines a consistent implementation cycle for these programs.

The following graphic illustrates how this guidance is implemented over the next decade.



Integrated Plan and Budget

START HERE

Planning

Budget 23-24

Budget 24-25

Additional & Tiered Planning

Codes

OUTCOMES & STRATEGIES		CSI/TSI	CTE	EIIS	HSS	SIA
Outcome-F	Improve the graduation rate for English Learners from Level 1 to Level 3 by Spring 2027 as measured by the District Accountability Details Report.					
F1	Provide culturally relevant and rigorous core instruction for English Learner students, including alternative				X	X
F2	Implement Credit Recovery programs with an emphasis on English learners.				X	X
F3	Increase access to career pathways (examples: CTEC and school-based career pathways) with an emphasis on		X		X	
F4	Reduce drop out rates, with an emphasis on English Learners	X			X	
F5	Further develop accountability and tracking system for district level monitoring of implementation of strategies to				X	X

How the State understands success

- Summary of Performance Measures
- Longitudinal Performance Growth Targets (LPGTs)
- High School Success Eligibility Requirements
- State CTE Perkins Performance Targets
- Progress Markers
- Local Optional Metrics
- Quarterly and Financial Reporting
- Auditing (SIA Funds only)
- Performance Reviews

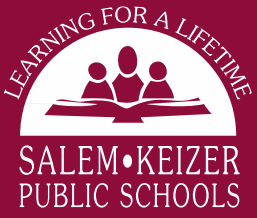
Longitudinal Performance Growth Targets (LPGTs)

ODE shall collaborate with the grant recipient to develop applicable Longitudinal Performance Growth Targets, based on:

- Data available for longitudinal analysis;
- Guidance established by the department; and
- Use the following applicable metrics for the overall population and disaggregated:
 - **Third-grade reading proficiency rates measured by ELA**
 - **Ninth-grade on-track rates**
 - **Regular attendance rates**
 - **Four-year or on-time graduation rates**
 - **Five-year completion rates**
 - Other local metrics may be used to develop applicable performance growth targets.



Referred to as
"5 Common Metrics"



Five-Year Growth Targets - DRAFT

Regular Attendance

District-Wide

	Year 1 2023-24	Year 2 2024-25	Year 3 2025-26	Year 4 2026-27	Year 5 2027-28
Stretch Target	57%	60%	64%	70%	75%
Baseline Target	55%	59%	63%	69%	73%

Focal Student Groups

	Year 1 2023-24	Year 2 2024-25	Year 3 2025-26	Year 4 2026-27	Year 5 2027-28
High School English Learners	40%	43%	47%	50%	55%

Five-Year Growth Targets - DRAFT

3rd Grade Reading (ELA)

District-Wide

	Year 1 2023-24	Year 2 2024-25	Year 3 2025-26	Year 4 2026-27	Year 5 2027-28
Stretch Target	44%	48%	52%	56%	60%
Baseline Target	40%	44%	48%	52%	56%

Focal Student Groups

	Year 1 2023-24	Year 2 2024-25	Year 3 2025-26	Year 4 2026-27	Year 5 2027-28
English Language Learners	22%	26%	30%	34%	38%

Five-Year Growth Targets - DRAFT

9th Grade On-Track

District-Wide

	Year 1 2023-24	Year 2 2024-25	Year 3 2025-26	Year 4 2026-27	Year 5 2027-28
Stretch Target	82%	84%	86%	88%	90%
Baseline Target	80%	82%	84%	86%	88%

Focal Student Groups

	Year 1 2023-24	Year 2 2024-25	Year 3 2025-26	Year 4 2026-27	Year 5 2027-28
Hispanic / Latinx Students	76%	78%	80%	82%	84%

Five-Year Growth Targets - DRAFT

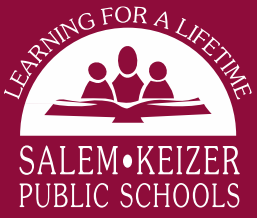
Four-Year Graduation

District-Wide

	Year 1 2023-24	Year 2 2024-25	Year 3 2025-26	Year 4 2026-27	Year 5 2027-28
Stretch Target	81%	83%	85%	87%	89%
Baseline Target	80%	82%	84%	86%	88%

Focal Student Groups

	Year 1 2023-24	Year 2 2024-25	Year 3 2025-26	Year 4 2026-27	Year 5 2027-28
High School English Learners	60%	62%	65%	78%	71%



Five-Year Growth Targets - DRAFT

Five-Year Completion

District-Wide

	Year 1 2023-24	Year 2 2024-25	Year 3 2025-26	Year 4 2026-27	Year 5 2027-28
Stretch Target	89%	91%	93%	95%	96%
Baseline Target	88%	90%	92%	93%	94%

Focal Student Groups

	Year 1 2023-24	Year 2 2024-25	Year 3 2025-26	Year 4 2026-27	Year 5 2027-28
High School English Learners	62%	67%	75%	81%	85%