

At school and under construction

Important information for Sprague students and parents

Welcome back to school! Construction at Sprague began in the summer and has certainly brought some changes to the campus.

Sprague will be an active construction site during the school year. Operations will be adjusted to help ensure the safety of students and the community while on campus. Here are some important things to know about school operations during construction:

- Staff, students and visitors must **obey all posted signs and stay out of the construction zone**. Do not move fences or go around barriers.
- Don't distract construction workers. **Please allow workers to focus on their jobs to keep themselves and others safe.**
- During construction, the main entrance into the building has been moved to the north end of the school. Please see the attached map.
- A walking path has been established to provide a safe way to travel between the upstairs commons and the auxiliary gym space. **Please use this path shown in orange on the map.**
- There are fewer permit-parking spots for students this year north of the school, however the lower parking lot by the stadium is open to students and typically has space available during the school day.
- Please help reduce traffic on campus by walking, riding a bike, riding the bus, or carpooling safely with COVID protocols in place.
- **Please use extra caution** when walking, biking or driving around campus and watch for construction vehicles and school buses.
- Be a good neighbor to those who live near the school and avoid parking in the neighborhood.
- No adjustments are being made to gate usage on Joseph Street. **Please use the entrance from Kuebler Boulevard to enter and exit the campus.**

Please see the map on the following page for details about adjustments to parent and student entrances, traffic flow and parking during construction.

Construction can cause some temporary disruptions, but the improved learning spaces for students are an important investment, and the results will soon outweigh the inconvenience.

Thank you for being cautious and staying safe during construction!



2018 BOND PROGRAM



EXPAND CTE & SCIENCE

Expand career-technical (vocational) and science education opportunities



RELIEVE OVERCROWDING

Add space to relieve overcrowding, prepare for future enrollment and expand core areas



INCREASE SAFETY & SECURITY

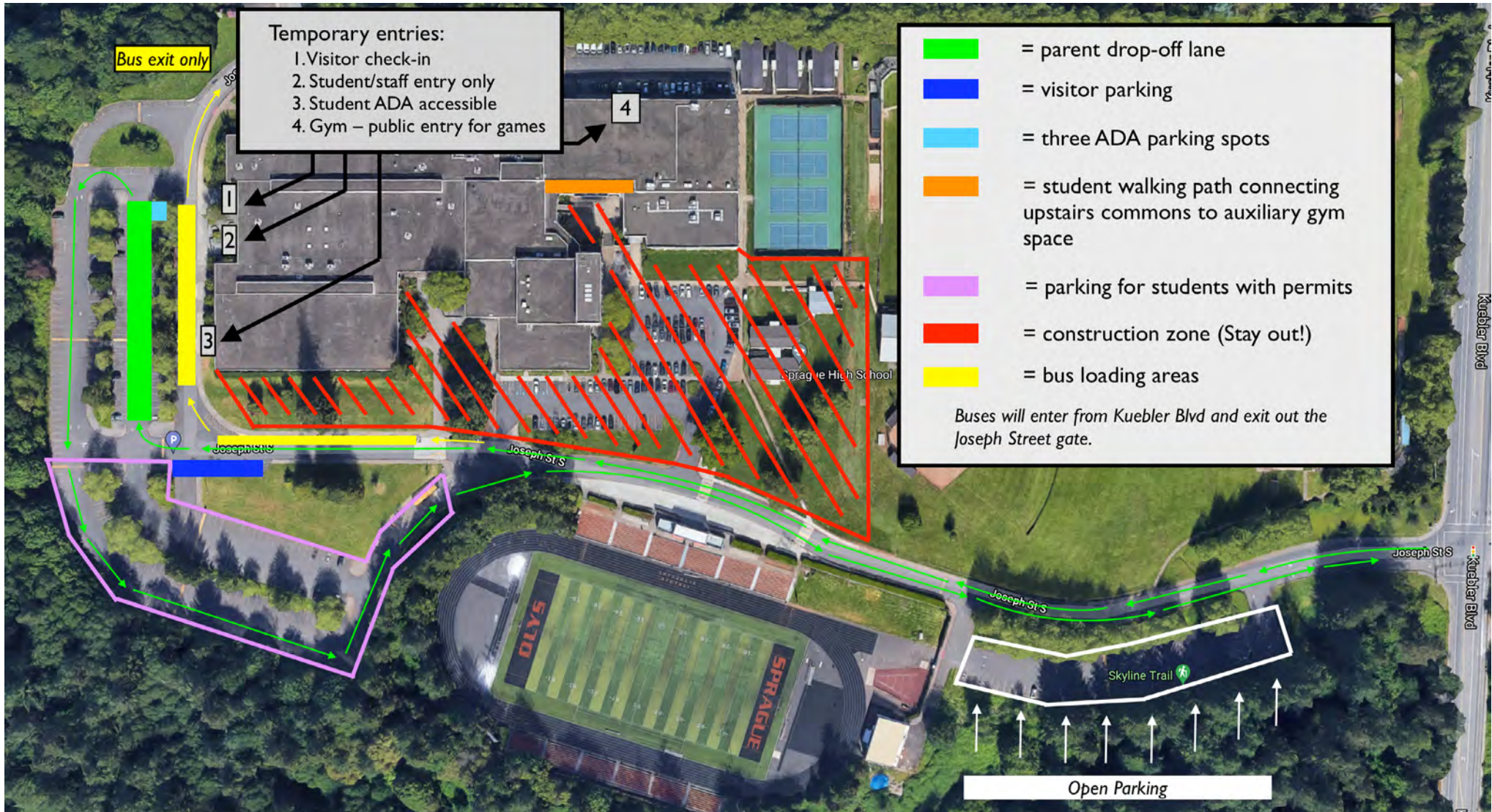
Secure school entries and upgrade electronic badge access systems; increase seismic safety



PROTECT PUBLIC INVESTMENT

Improve existing buildings to ensure longevity of past and present public investments

Details about adjustments during construction:



For more information about construction at Sprague, visit the [bond projects status page](#).